

**Students'
Unions'**
Advice
Service

**We'll help you
explore your
options...**

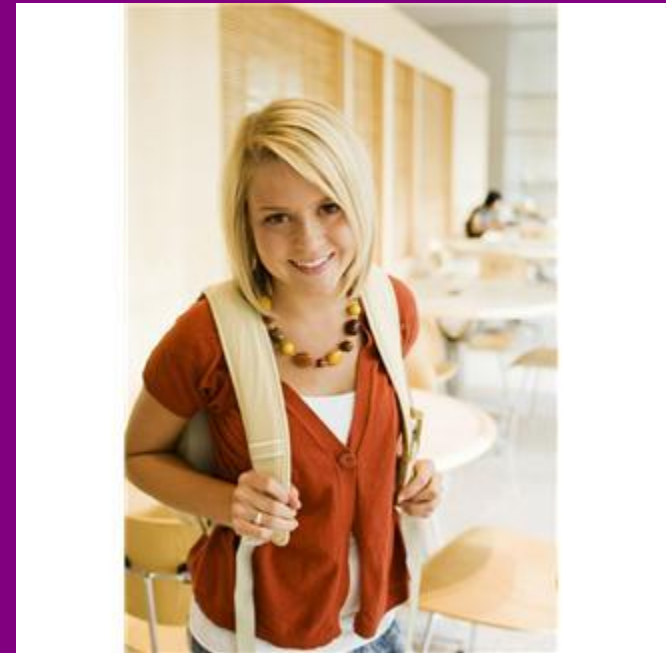


The Advice Service is...

- for all students
- free, confidential and impartial support
- independent of the University and the Colleges
- provided by Cambridge University Students' Union (CUSU) and the Graduate Union (GU)

What types of issues can students bring to the Advice Service?

- You can come to the Service with any issues or problems that you might experience as a student, from questions or concerns about your education or University procedures to a health enquiry or a mental health issue.



Students sometimes come to us when...

- Things are not going according to plan either personally or academically
- They have a question and are unsure where to find the answer
- They feel they have been treated unfairly
- They want to find out about their rights as a student

Students often ask for advice on...

- Academic-related issues
- University and College procedures & regulations
- Homesickness and culture shock
- Personal issues
- Disciplinary matters
- Bullying/harassment
- Welfare concerns
- Mental health issues
- Resolving disputes
- Taking time out from studies (intermission)

What kind of support can the Advice Service offer me?

- A listening ear
- Advice
- Assistance
- Information
- Representation
- Support that is non-judgemental, impartial and independent



How can the Advice Service help me?

- We can discuss your concerns with you
- We can help explore what options are available to you
- We can represent you at College or University level
- If we can't help you directly, we will either know or find out who can

We are qualified to help you through our...

- Two professional Student Advisors
- in-depth knowledge of services available in Colleges, the University and the wider community in Cambridge and nationally
- expertise on College and University rules, regulations and procedures
- eagerness to do the necessary research to help you as much as we can

Why would I choose to use the Students' Unions' Advice Service?

You may:

- be unaware of the support available to you in your College
- wish to supplement the support you are receiving from your College
- prefer to talk to someone outside of your College
- want to deal with an organisation which is independent from your College and the University
- not know where else to turn

We are based at:

CUSU & the Graduate Union

Upper Ground floor

17 Mill Lane

Cambridge

CB2 1RX

just behind the Pitt Building



Get in touch...

- Monday to Friday, 9am-5pm all year round
- Advice drop-in sessions on Tuesdays and Thursdays from 12-2pm at the GU
- Drop in, email or call to make an appointment
- Call: 01223 746 999
- Email: advice@studentadvice.cam.ac.uk
- Check out our informative website – www.studentadvice.cam.ac.uk

Thank you!