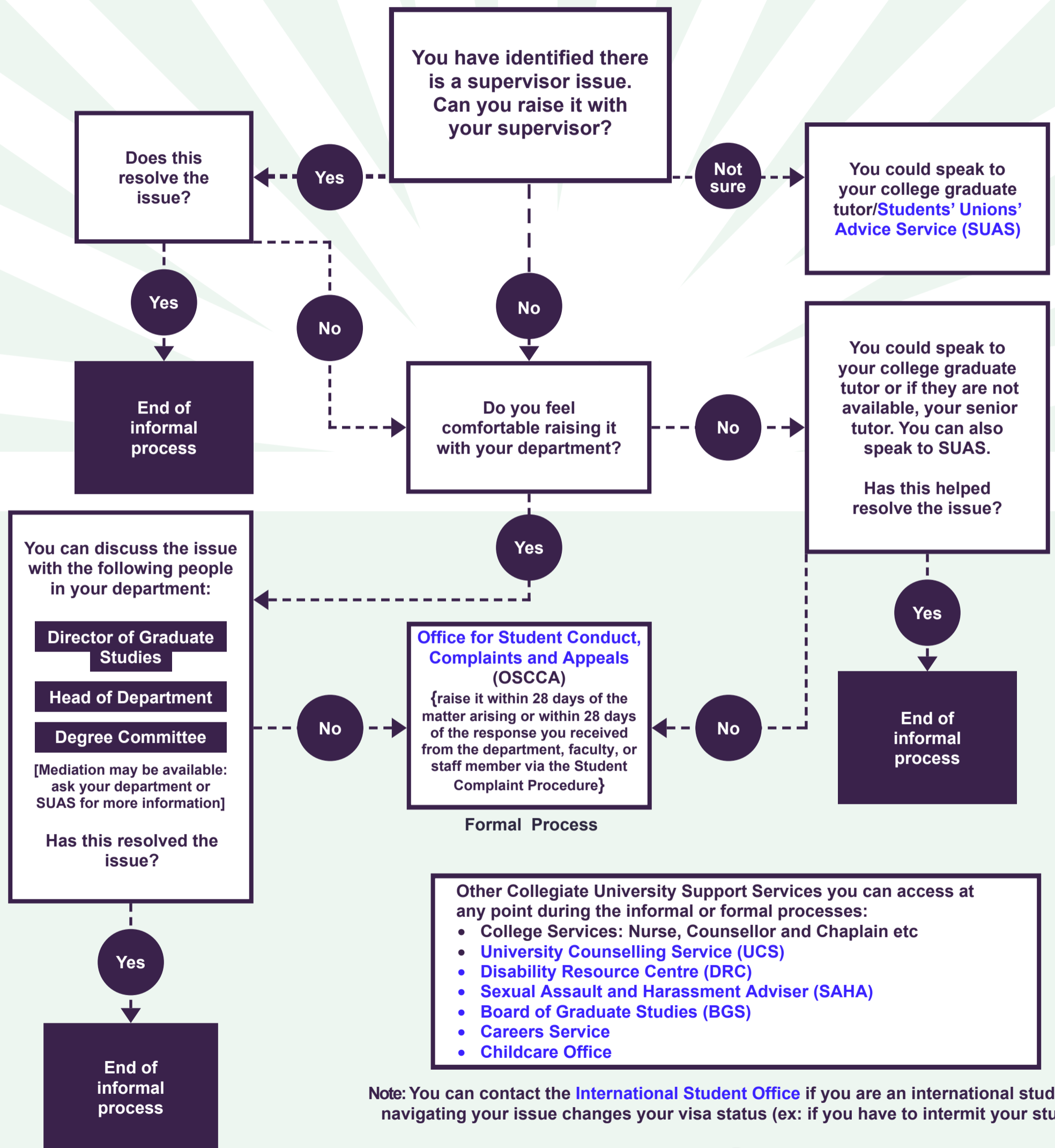


CONFLICT NAVIGATION FLOW CHART

Ideally, at the start of the year you and your supervisor should refer to the [Code of Practice for Research Students](#) to understand both of your responsibilities and expectations. It may also be helpful to refer to it when you have an issue.



- Other Collegiate University Support Services you can access at any point during the informal or formal processes:
- College Services: Nurse, Counsellor and Chaplain etc
 - [University Counselling Service \(UCS\)](#)
 - [Disability Resource Centre \(DRC\)](#)
 - [Sexual Assault and Harassment Adviser \(SAHA\)](#)
 - [Board of Graduate Studies \(BGS\)](#)
 - [Careers Service](#)
 - [Childcare Office](#)

Note: You can contact the [International Student Office](#) if you are an international student & navigating your issue changes your visa status (ex: if you have to intermit your studies)

GRADUATE RIGHTS

